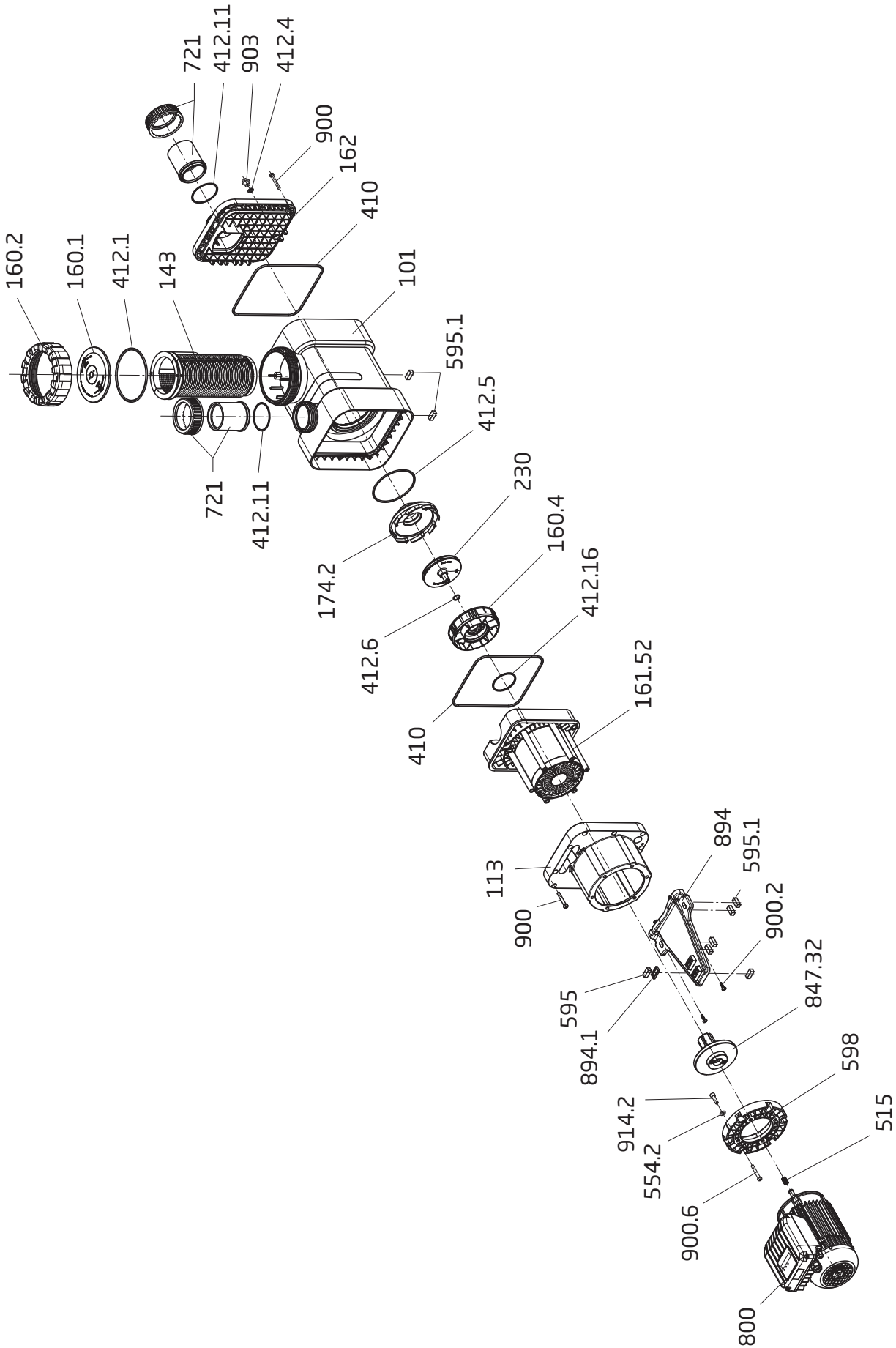


BADU® Delta-MK Eco VS



Part Pièce	Qty. Qté.	Description	Désignation	Article no. Réf.	Euro/each Euro/pièce
101	1	<i>Housing black/white, cpl., consisting of:</i> Part 101, 143, 160.1, 160.2, 162, 412.1, 412.4, 410, 900 + 903	<i>Corps de pompe cpl., coloris blanc/noir, composé de:</i> Pièce 101, 143, 160.1, 160.2, 162, 412.1, 412.4, 410, 900 + 903	290.1410.168	211,05
113	1	Intermediate housing	Corps intermédiaire	290.1411.309	59,96
143	1	Strainer basket	Crépine d'aspiration	290.1414.304	20,52
160.1	1	Transparent lid with LED	Couvercle, transparent, avec LED	292.1116.012	63,83
160.2	1	Ring for lid, black	Bague fileté, coloris noir	292.1116.020	23,73
160.4 *	1	Lid for gland housing	Couvercle pr carter	290.1416.042	44,90
161.52*	1	Gland housing cpl.	Carter cpl.	290.1416.160	382,71
162	1	Gland housing, inlet side	Couvercle de corps, côté d'aspiration	290.1416.200	44,67
174.2	1	Diffuser	Diffuseur	290.1417.427	47,41
230*	1	Impeller, dia = 110 mm, B = 10.5 mm	Turbine, D = 110 mm, I = 10.5 mm	290.1423.034	59,96
410	1	Profile seal, 221 x 5.4 mm, NBR	Joint profilé, 221 x 5,4 mm, NBR	290.1441.225	8,85
412.1	1	O-ring for lid, 137 x 5 mm, NBR	Joint torique pr couvercle, 137 x 5 mm, NBR	292.1141.210	2,85
412.2	1	Profile seal, 221 x 5.4 mm, NBR	Joint profilé, 221 x 5,4 mm, NBR	290.1441.225	8,85
412.4	1	O-ring for drain plug, 11 x 2.5 mm	Joint torique pr bouchon de vidange, 11 x 2,5 mm	230.2002.062	0,33
412.5	1	O-ring for diffuser, 117 x 4 mm	Joint torique pr diffuseur, 117 x 4 mm	262.0001.015	1,09
412.6*	1	O-ring, 16 x 2.0 mm, NBR	Joint torique, 16 x 2,0 mm, NBR	290.1441.500	1,19
412.11	2	O-ring for pipe connections, 68 x 3.5 mm	Joint torique pr raccords tuyauterie, 68 x 3,5 mm	292.1441.210	0,92
412.16*	1	O-ring, 62 x 3.0 mm, NBR	Joint torique, 62 x 3,0 mm, NBR	290.1441.360	5,24
515	1	Star-ring, 12 x 18 mm	Manchon ondulé	292.0351.510	3,21
554.2	4	Washer, dia = 8.4 mm, A 2	Rondelle, D = 8,4 mm, A 2	587.1250.802	0,37
595	1	Rubber buffer, 10 x 12.5 x 27 mm	Tampon en caoutchouc, 10 x 12,5 x 27 mm	290.1259.500	0,76
595.1	7	Rubber buffer, 10 x 10 x 27 mm	Tampon en caoutchouc, 10 x 10 x 27 mm	292.0359.501	0,76
598	1	Intermediate flange, PP	Flasque intermédiaire	290.1459.801	36,23
721	2	<i>Union, consisting of:</i> Union nut for glue socket dia = 63+75 mm Glue socket dia -inner = 63 mm, PVC-U, grey	<i>Raccord, composé de:</i> Écrou-raccord pr douille à collet D = 63+75 mm Douille à collet D-int. = 63 mm, PVC-U, coloris gris	292.1472.111 292.1472.126	3,46 15,47
800	1	Single-phase motor, 1.40 kW, 230 V	Moteur monophasé, 1,40 kW, 230 V	298.0140.501	1.284,62
847.32	1	Inner rotor, cpl., varnished, with magnets	Rotor intérieur, cpl, verni, avec aimants	290.1484.766	282,48
894	1	Pump foot	Socle pompe	290.1489.403	12,49
894.1	2	Adapter for motor foot	Adaptateur pr pied de moteur	292.0389.410	0,40
900	10 10	<i>Screw, 7 x 48.4 mm, A 2</i> for gland housing, inlet side for intermediate housing	<i>Vis autotaraudeuse, 7 x 48,4 mm, A 2</i> pr couvercle de corps côté d'aspiration pr corps intermédiaire	292.1690.002	1,97
900.2	2	Screw, 6 x 22 mm, A 4	Vis autofileteuse, 6 x 22 mm, A 4	587.9006.023	1,12
900.6	6	Screw, 7 x 48.4 mm, A 2	Vis autofileteuse, 7 x 48,4 mm, A 2	292.1690.002	1,97
903	1	Drain plug, G 1/4, PP, black	Bouchon de vidange, G 1/4, PP, coloris noir	292.3591.201	0,62
914.2	4	Hexagon socket screw, M 8 x 26, A 2	Vis à tête six pans creux, M 8 x 16, A 2	587.9120.816	0,76
412.11 + 721	1	<i>Connection set cpl. consisting of:</i> 2 x O-ring, 2 x glue socket and 2 x union nut for glue socket dia = 63mm, PVC-U	<i>Kit de raccord cpl., composé de :</i> 2 x joint torique, 2 x douille à collet et 2 x écrou-raccord pr douille à collet D = 63 mm, PVC-U	292.1472.127	39,60
	1	Single-phase motor unit, 1.40 kW, 1~	Unité moteur monophasé, 1,40 kW, 1~	210.3281.458	1.635,53
	1	Opening device for LED lid	Clé de couvercle pr couvercle avec LED	292.1157.701	11,54
	1	Repair set of O-rings	Set de réparation joints toriques pr Delta-MK Eco VS	290.1441.301	30,22

* Repairs of the magnet assembly, including exchange of the impeller, may only be carried out by SPECK's repair service!

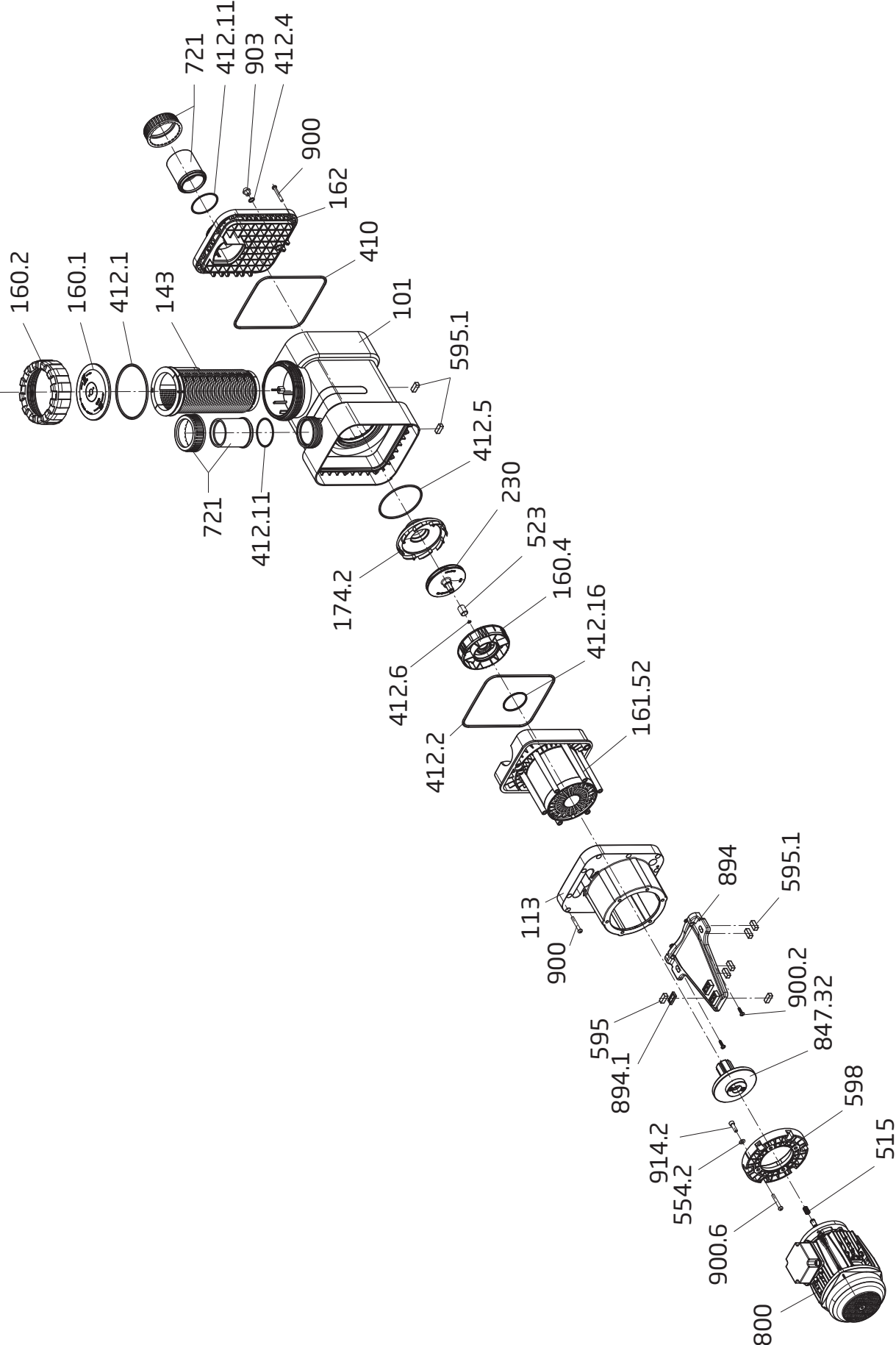
Reparation d'ensemble d'aimant, incluant l'échange de la turbine, seulement en usine SPECK!

Spare parts for motors such as impeller fans, fan hoods, terminal boxes, capacitors, ball bearings and end shields are only available upon request.

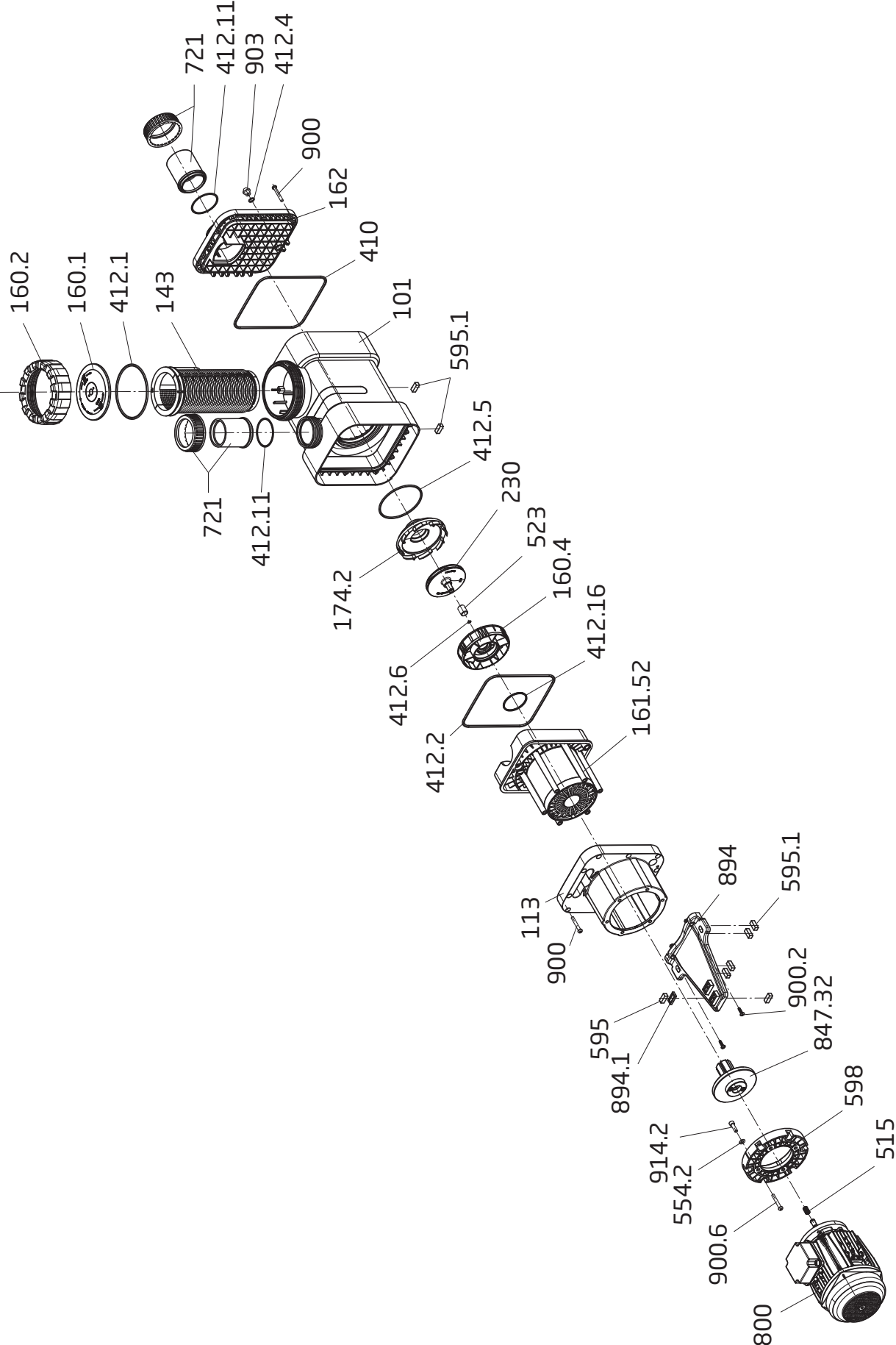
Pièces pr moteurs (ventilateurs, capots de ventilateurs, borniers, condensateurs, roulements à bille, flasques): tarifs sur demande!

Please indicate the pump serial number when placing an enquiry/order.

pr toute demande de prix/commande, merci d'indiquer le N° de série de la pompe.



Part Pièce	Qty. Qté.	Description	Désignation	Article no. Réf.	Euro/each Euro/pièce
101	1	<i>Housing black/white, cpl., consisting of:</i> Part 101, 143, 160.1, 160.2, 162, 412.1, 412.4, 410, 900 + 903	<i>Corps de pompe cpl., coloris blanc/noir, composé de:</i> Pièce 101, 143, 160.1, 160.2, 162, 412.1, 412.4, 410, 900 + 903	290.1410.168	211,05
113	1	Intermediate housing	Corps intermédiaire	290.1411.309	59,96
143	1	Strainer basket	Crépine d'aspiration	290.1414.304	20,52
160.1	1	Transparent lid with LED	Couvercle, transparent avec LED	292.1116.012	63,83
160.2	1	Ring for lid, black	Bague fileté, coloris noir	292.1116.020	23,73
160.4 *	1	Lid for gland housing	Couvercle pr carter	290.1416.042	44,90
161.52*	1	Gland housing	Carter	290.1416.160	382,71
162	1	Gland housing, inlet side	Couvercle de corps côté d'aspiration	290.1416.200	44,67
174.2	1	<i>Diffuser</i> for BADU Delta-MK 8 and 12 for BADU Delta-MK 16 and 20 for BADU Delta-MK 27	<i>Diffuseur</i> pr BADU Delta-MK 8 + 12 pr BADU Delta-MK 16 + 20 pr BADU Delta-MK 27	290.1417.428 290.1417.426 290.1417.427	31,77 44,79 47,41
230*	1	<i>Impeller</i> dia = 110 mm, b = 5 mm, Delta-MK 8 dia = 110 mm, b = 6 mm, Delta-MK 12 dia = 110 mm, b = 8 mm, Delta-MK 16 dia = 110 mm, b = 8 mm, Delta-MK 20 dia = 110 mm, b = 10.5 mm, Delta-MK 27	<i>Turbine</i> D = 110mm, l = 5mm, Delta-MK 8 D = 110mm, l = 6mm, Delta-MK 12 D = 110mm, l = 8mm, Delta-MK 16 D = 110mm, l = 8mm, Delta-MK 20 D = 110mm, l = 10,5mm, Delta-MK 27	290.1423.038 290.1423.037 290.1423.036 290.1423.035 290.1423.034	44,13 47,30 49,31 54,24 59,96
410	1	Profile seal, 221 x 5.4 mm, NBR	Joint sur corps, 221 x 5,4mm, NBR	290.1441.225	8,85
412.1	1	O-ring for lid, 137 x 5 mm, NBR	Joint torique pr couvercle, 137 x 5mm, NBR	292.1141.210	2,85
412.2	1	Profile seal, 221 x 5.4 mm, NBR	Joint sur corps, 221 x 5,4mm, NBR	290.1441.225	8,85
412.4	1	O-ring for drain plug, 11 x 2.5 mm	Joint torique pr bouchon de vidange, 11 x 2,5 mm	230.2002.062	0,33
412.5	1	O-ring for diffuser, 117 x 4 mm	Joint torique pr diffuseur, 117 x 4 mm	262.0001.015	1,09
412.6*	1	<i>O-ring, NBR</i> 6 x 2 mm, for BADU Delta-MK 8 - 16 16 x 2.0 mm, for BADU Delta-MK 20 + 27	<i>Joint torique, NBR</i> 6 x 2 mm, pr BADU Delta-MK 8 - 16 16 x 2,0 mm, pr BADU Delta-MK 20 + 27	292.0141.261 290.1441.500	0,62 1,19
412.11	2	O-ring for pipe connections, 68 x 3.5 mm	Joint torique pr raccords tuyauterie, 68 x 3,5 mm	292.1441.210	0,92
412.16*	1	O-ring, 62 x 3.0 mm, NBR	Joint torique, 62 x 3,0 mm, NBR	290.1441.360	5,24
515	1	Star-ring, 12 x 18 mm, für BADU Delta-MK 20 + 27	Manchon ondulé, 12 x 18mm, pr BADU Delta-MK 20 + 27	292.0351.510	3,21
523	1	Shaft protection sleeve, for BADU Delta-MK 8 - 16	Chemise d'arbre sous garniture, pr BADU Delta-MK 8 - 16	290.1452.300	9,87
554.2	4	Washer, dia = 8.4 mm, A 2	Rondelle, D = 8,4 mm, A 2	587.1250.802	0,37
595	1	Rubber buffer, 10 x 10 x 27 mm	Tampon en caoutchouc, 10 x 10 x 27 mm	292.0359.501	0,76
595.1	7	Rubber buffer, 10 x 10 x 27 mm	Tampon en caoutchouc, 10 x 10 x 27 mm	292.0359.501	0,76
598	1	Intermediate flange, PP	Flasque intermédiaire, PP	290.1459.801	36,23
721	2	<i>Union for BADU Delta-MK 8, consisting of:</i> Union nut for glue socket dia = 63+75 mm Glue socket dia-i = 50 mm, PVC-U, grey <i>Union for BADU Delta-MK 12 - 27, consisting of:</i> Union nut for glue socket dia = 63+75 mm Glue socket dia-inner = 63 mm, PVC-U, grey	<i>Raccord pr BADU Delta-MK 8, composé de :</i> Écrou-raccord pr douille à collet D = 63+75 mm Douille à collet D-i = 50 mm, PVC-U, coloris gris <i>Raccord pr BADU Delta-MK 12 - 27, composé de :</i> Écrou-raccord pr douille à collet D = 63+75 mm Douille à collet D-i = 63 mm, PVC-U, coloris gris	292.1472.111 292.1672.134 292.1472.111 292.1472.126	3,46 11,96 3,46 15,47
800	1	<i>Single-phase motor, 230 V</i> 0.30 kW, for BADU Delta-MK 8 0.45 kW, for BADU Delta-MK 12 0.65 kW, for BADU Delta-MK 16 0.75 kW, for BADU Delta-MK 20 1.00 kW, for BADU Delta-MK 27 <i>Three-phase motor, 400/230V</i> 0.30 kW, for BADU Delta-MK 8 0.45 kW, for BADU Delta-MK 12 0.65 kW, for BADU Delta-MK 16 0.75 kW, for BADU Delta-MK 20 1.00 kW, for BADU Delta-MK 27	<i>Moteur monophasé, 230 V</i> 0.30 kW, pr BADU Delta-MK 8 0.45 kW, pr BADU Delta-MK 12 0.65 kW, pr BADU Delta-MK 16 0.75 kW, pr BADU Delta-MK 20 1.00 kW, pr BADU Delta-MK 27 <i>Moteur triphasé 400/230 V</i> 0.30 kW, pr BADU Delta-MK 8 0.45 kW, pr BADU Delta-MK 12 0.65 kW, pr BADU Delta-MK 16 0.75 kW, pr BADU Delta-MK 20 1.00 kW, pr BADU Delta-MK 27	298.0030.021 298.0045.032 298.0065.023 298.0075.011 298.0100.015 297.0030.010 297.0045.017 297.0065.007 297.0075.012 297.0100.000	263,93 335,90 406,88 444,87 548,84 154,94 163,97 169,97 484,85 548,84
847.32	7	<i>Inner rotor, cpl., varnished, with magnets</i> for Delta-MK 8 and 12 for Delta-MK 16 for Delta-MK 20, 27 1~ 27 3~ (until 02/2021) for Delta-MK 27 3~ (as of 03/2021)	<i>Rotor intérieur cpl., verni, avec aimants</i> pr Delta-MK 8 + 12 pr Delta-MK 16 pr Delta-MK 20, 27 Mono, 27 Tri (jusqu'à 02/2021) pr Delta-MK 27 Tri (à partir de 03/2021)	290.1484.760 290.1484.764 290.1484.759 290.1484.768	282,48 282,48 282,48 282,48
894	1	Pump foot	SoCLE pompe	290.1489.403	12,49
894.1	4 5 2 1	<i>Adapter</i> for BADU Delta-MK 8 and 12 (each until 02/24) for BADU Delta-MK 8+12 1~ (as of 03/24) for BADU Delta-MK 16 1~ (until 04/24), 20 1~, and BADU Delta-MK 27 (as of 03/24) for BADU Delta-MK 8+12 3~ (each as of 03/24), 16 3~, 20 for BADU Delta-MK 27 (until 02/24)	<i>Adaptateur</i> pr BADU Delta-MK 8 + 12 (chacun jusqu'à 02/24) pr BADU Delta-MK 8+12 Mono (chacun à partir de 03/24) pr BADU Delta-MK 16 Mono (à partir de 05/24) pr BADU Delta-MK 16 Mono (jusqu'à 04/24), 20 Mono, BADU Delta-MK 27 (à partir de 03/24) pr BADU Delta-MK 8+12 Tri (à partir de 03/24), 16 Tri, 20 pr BADU Delta-MK 27 (jusqu'à 02/24)	292.0389.410	0,40
900	10 10	<i>Screw, 7 x 48.4 mm, A 2</i> for gland housing, aspiration side for intermediate housing	<i>Vis autotaraudeuse, 7 x 48,4 mm, A 2</i> pr couvercle de corps côté d'aspiration pr corps intermédiaire	292.1690.002	1,97
900.2	2	Screw, 6 x 22 mm, A 4	Vis autofileteuse, 6 x 22 mm, A 4	587.9006.023	1,12
900.6	6	Screw, 7 x 48.4 mm, A 2	Vis autofileteuse, 7 x 48,4 mm, A 2	292.1690.002	1,97
903	1	Drain plug, G 1/4, PP, black	Bouchon de vidange, G 1/4, PP, coloris noir	292.3591.201	0,62
914.2	4	Hexagon socket screw, M 8 x 16, A 2	Vis à tête six pans creux, M 8 x 16, A 2	587.9120.816	0,76



Part Pièce	Qty. Qté.	Description	Désignation	Article no. Réf.	Euro/each Euro/pièce
412.11 + 721	1	Connection set cpl., consisting of: 2 x O-ring, 2 x glue socket and 2 x union nut for glue socket dia = 50mm, PVC-U, BADU Delta-MK 8 dia = 63 mm, PVC-U, BADU Delta-MK 10 - 27	Kit de raccord cplt., composé de: 2 x joint torique, 2 x douille à collet et 2 x écrou-raccord pr douille à collet d = 50 mm, PVC-U, BADU Delta-MK 8 d = 63 mm, PVC-U, BADU Delta-MK 10 - 27	292.1472.128 292.1472.127	32,60 39,60
	1	Single-phase motor unit, 230 V 0.30 kW, for BADU Delta-MK 8 0.45 kW, for BADU Delta-MK 12 0.65 kW, for BADU Delta-MK 16 0.75 kW, for BADU Delta-MK 20 1.00 kW, for BADU Delta-MK 27 Three-phase motor unit, 400/230V 0.30 kW, for BADU Delta-MK 8 0.45 kW, for BADU Delta-MK 12 0.65 kW, for BADU Delta-MK 16 0.75 kW, for BADU Delta-MK 20 1.00 kW, for BADU Delta-MK 27	Unité de moteur monophasé, 230 V 0.30 kW, pr BADU Delta-MK 8 0.45 kW, pr BADU Delta-MK 12 0.65 kW, pr BADU Delta-MK 16 0.75 kW, pr BADU Delta-MK 20 1.00 kW, pr BADU Delta-MK 27 Unité de moteur triphasé, 230/400V 0.30 kW, pr BADU Delta-MK 8 0.45 kW, pr BADU Delta-MK 12 0.65 kW, pr BADU Delta-MK 16 0.75 kW, pr BADU Delta-MK 20 1.00 kW, pr BADU Delta-MK 27	210.3080.358 210.3120.358 210.3160.358 210.3200.358 210.3270.358 210.3080.357 210.3120.357 210.3160.357 210.3200.357 210.3270.357	870,75 872,74 886,74 947,74 1.018,70 855,75 858,75 876,74 942,73 1.024,69
	1	Opening device for LED lid	Clé de couvercle pr couvercle avec LED	292.1157.701	11,54
	1	Repair set of O-rings for BADU Delta-MK 8 - 16 for BADU Delta-MK 20 and 27	Set de réparation joints toriques pr BADU Delta-MK 8 - 16 pr BADU Delta-MK 20+27	290.1441.300 290.1441.301	29,67 30,22

* Repairs of the magnet assembly, including exchange of the impeller, may only be carried out by SPECK's repair service!

Reparation d'ensemble d'aimant, incluant l'échange de la turbine, seulement en usine SPECK!

Spare parts for motors such as impeller fans, fan hoods, terminal boxes, capacitors, ball bearings and end shields are only available upon request.

Pièces pr moteurs (ventilateurs, capots de ventilateurs, borniers, condensateurs, roulements à bille, flasques): tarifs sur demande!

Please indicate the pump serial number when placing an enquiry/order.

pr toute demande de prix/commande, merci d'indiquer le N° de série de la pompe.